



Main Guide

Product Set-up

The following provides a description on setting up the Beta-Unit with your current Valve.

1. Phone Set-up

To begin configuring your Beta Unit, you will need to first install and obtain access to the Beta Version of our FloLogic App.

Please refer to the “Preparing Your Phone” document. Follow the instructions according to the operating system on your device.

2. Gateway & Z-Connect Set-up

When you finish your phone set-up you should have a registered, new account on the Test-Server in the FloLogic app.

If so, continue to the new step.

There will be 5 distinct parts in the box you receive.

1. Z-Connect
2. Gateway
3. USBC Power Supply
4. Ethernet cord
5. 12” White telephone cable

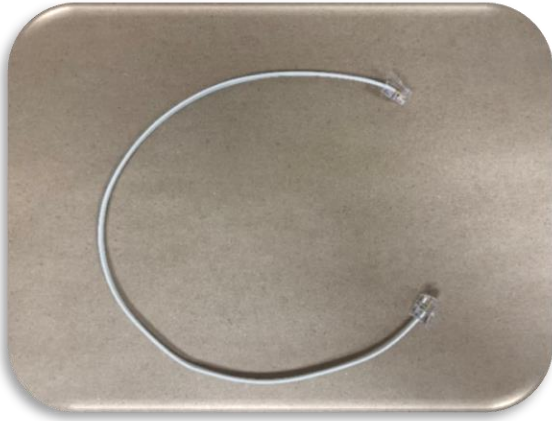
Z-Connect



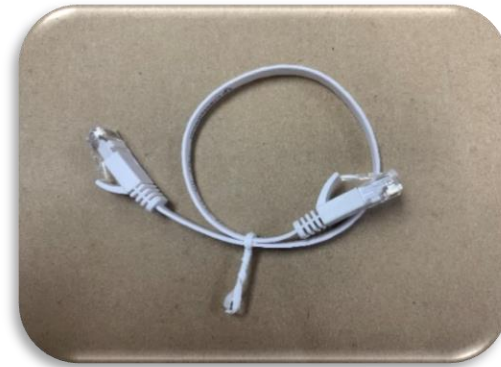
Gateway



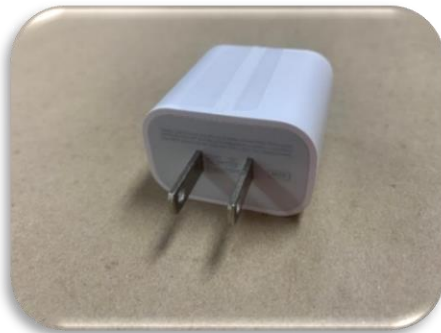
12" White Telephone Cable



Ethernet Cable



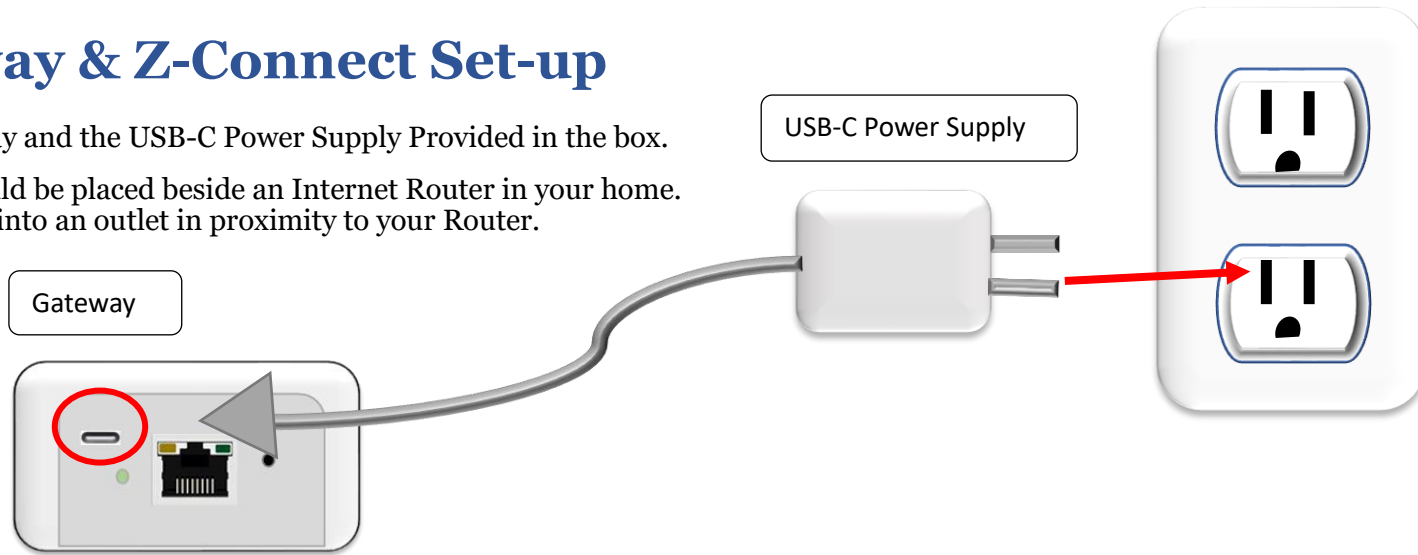
USBC Power supply



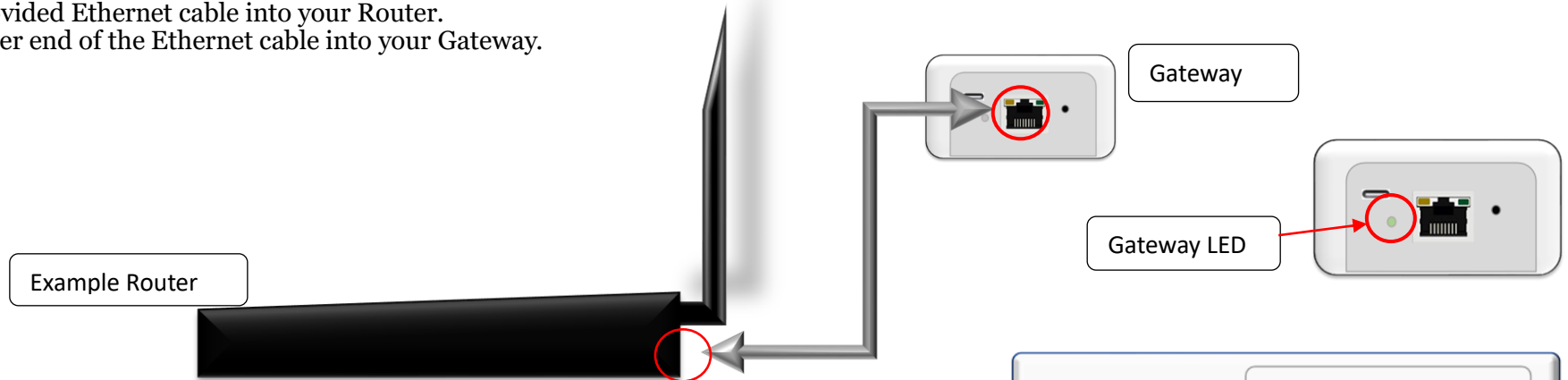
2. Gateway & Z-Connect Set-up

Locate the Gateway and the USB-C Power Supply Provided in the box.

The Gateway should be placed beside an Internet Router in your home. Plug the Gateway into an outlet in proximity to your Router.



Your router should have multiple Ethernet connections on the back near the power supply. If not, you may need to purchase a splitter. Plug the provided Ethernet cable into your Router. Plug the other end of the Ethernet cable into your Gateway.

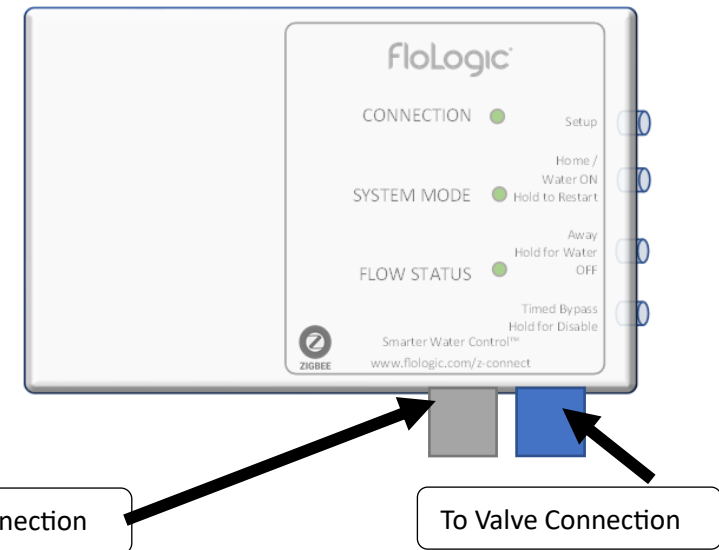


The Gateway LED should now turn on and cycle through several colors, ending on green.

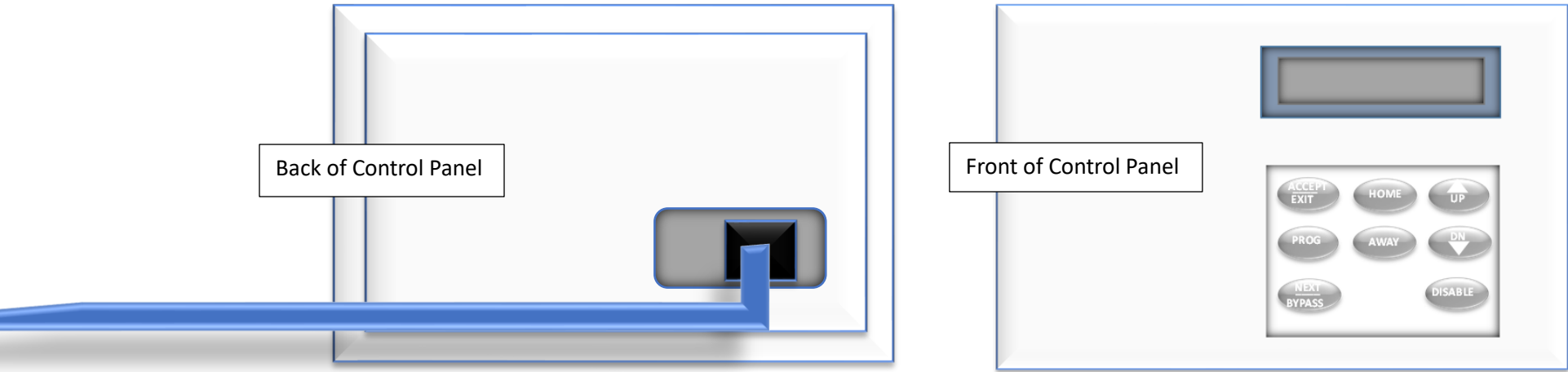
2. Gateway & Z-Connect Set-up

The next step is based on whether you have an older Connect with your current Valve system. If you do currently have an older Connect, the new Beta Z-Connect will replace it.

Both wires connected to your older Connect should be unplugged and moved over to plug into the same ports on the Z-Connect. These ports are the same on both Connects.



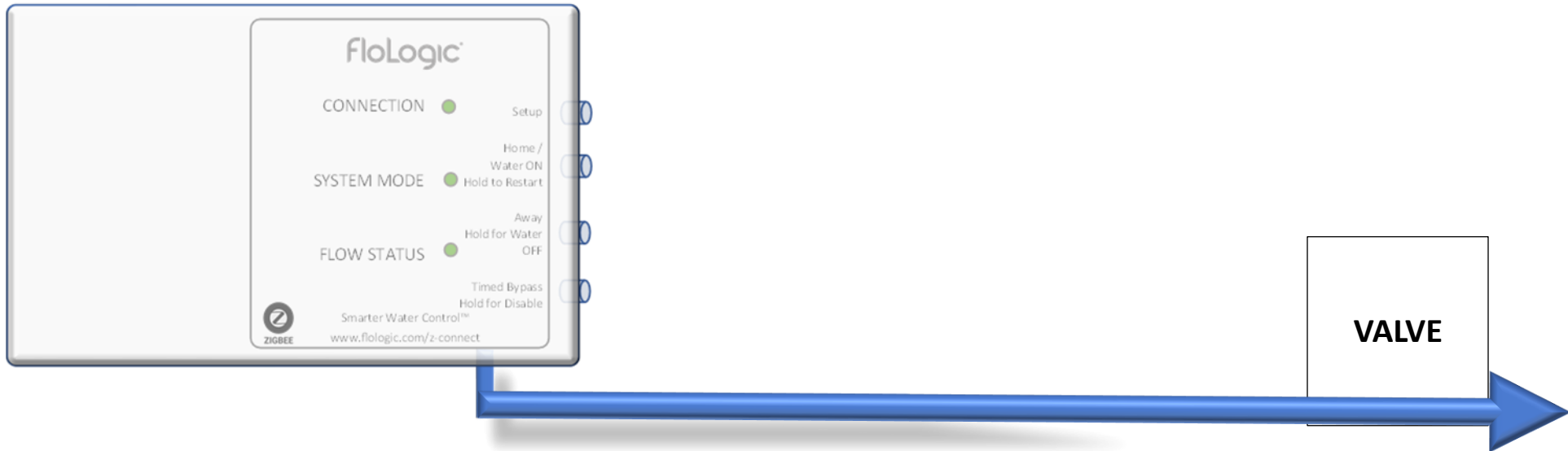
If you do not have a Connect with your current FloLogic system, unplug the cord from your Control Panel located at the back of the Unit.



This is the cord that should lead to your Valve.

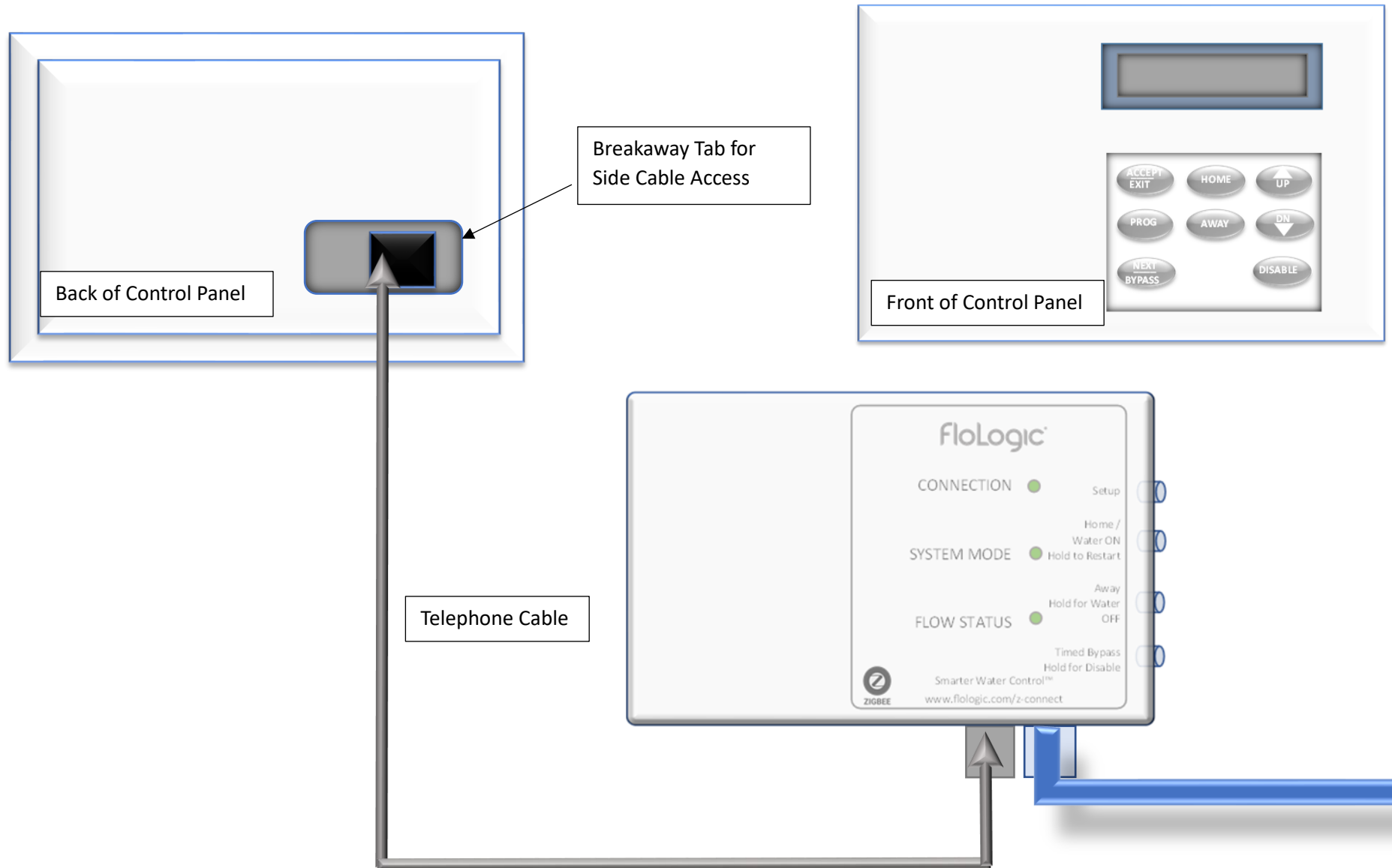
Plug the cord you just unplugged from your Control Panel into the Blue (right hand) Z-Connect port shown below.

This cord should now be plugged into the new Z-Connect beta system and lead directly to your Valve.



2. Gateway & Z-Connect Set-up

Next, you will connect the Control Panel into the Z-Connect using the provided 12" cable. There is a "break away" tab on the side of the Control Panel that can be removed to allow side access for the cable.



Now the Gateway and Z-Connect should be able to pair with one another and should do it automatically.

After giving them a few minutes to pair, if all 3 LEDs on the Z-Connect are Green, **you have successfully set them up!**

If the Z-Connects LEDs are **not** all green, please reference the “*Troubleshooting Beta Setup*” document for potential issues and solutions to help.

If you still are having trouble setting up the Beta Units, please call FloLogic for assistance. (1-877-356-5644 Extension 310 or 312)

3. Provisioning

Successfully paired Beta Units can now be provisioned as your final step in the set-up process.

Please reference the document labeled “Beta Provisioning Walkthrough” to finish.

Beta Set-up Help

If you have any questions during the set-up process, please reach out or call us here at FloLogic.

1-877-356-5644 using Extension 310 or Extension 312 to reach the Engineering Department for assistance.